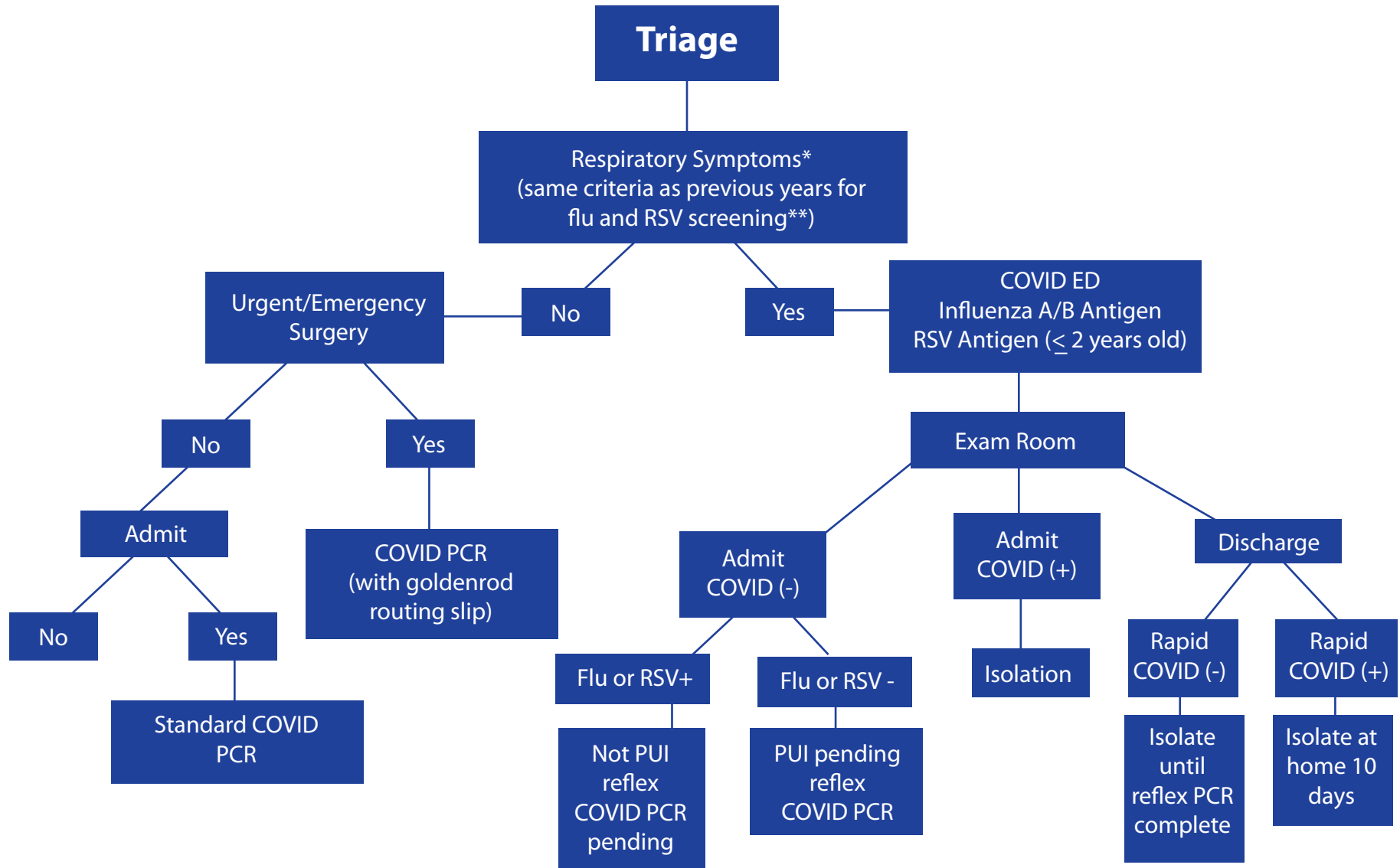


# ED COVID-19 Testing Algorithm



\* Symptoms include: fever  $\geq 101^{\circ}$  F, cough, nausea or decrease in appetite, vomiting or diarrhea, increased respiratory secretions, wheezing

\*\*Testing criteria:

- One year or older without history of heart or lung disease: order influenza and COVID antigen tests
- Two years or younger with history of heart or lung disease: order influenza, RSV and COVID antigen tests
- Younger than one year: order influenza, RSV and COVID antigen tests